

# Alpine conservation in Wales





# Characteristics

- Furthest south so many edge-of-range populations
- Mainly oceanic so high rainfall and not too cold
- Heavy grazing for many years so impact on populations
- Heavily used recreationally

= restricted diversity and population size

# Controlling grazing







Plants expanding  
onto rocky ground  
below cliffs









# Direct manipulation





# Recreation

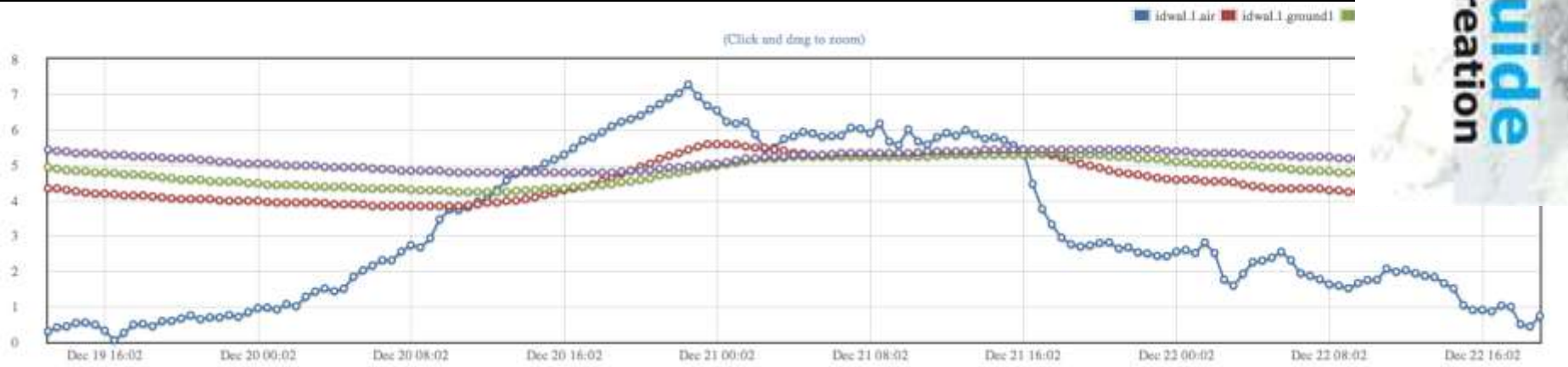




# Clogwyn y Garnedd - Great Gully area



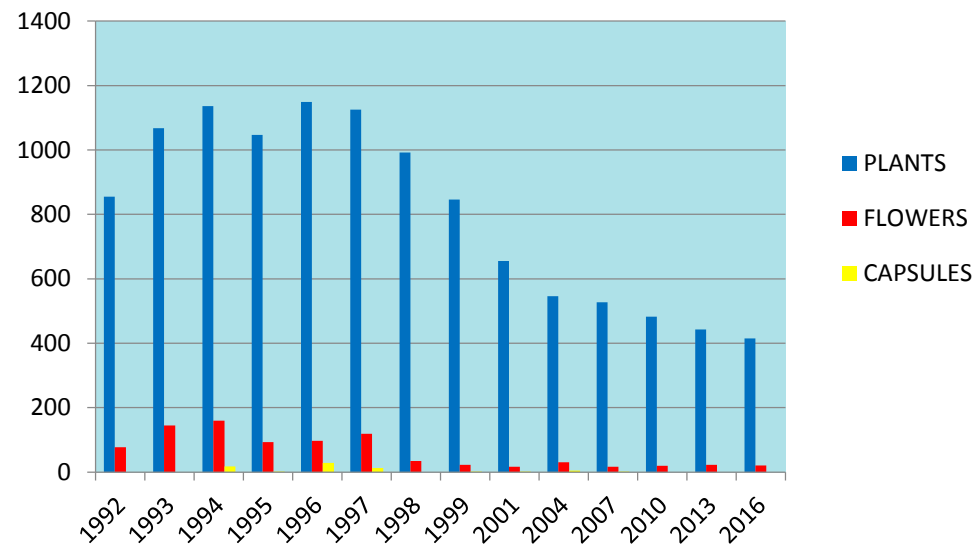
## North Wales White Guide Reconciling Conservation and Recreation Winter Climbing in Snowdonia





# Monitoring

Glyderau Gagea 1992 - 2016







Long-term effects of climate change



# Montane habitats









# Plantlife short films on Youtube

To celebrate wild plants, advance their conservation & illustrate the challenges they face.

Plants on the edge: Arctic-alpine  
conservation

[https://www.youtube.com/watch?v=eBY\\_  
B8n5zLo](https://www.youtube.com/watch?v=eBY_B8n5zLo)