

The Haygrove logo is located in the top left corner. It consists of the word "Haygrove" in a serif font, with a green arch over the "y". The logo is enclosed in a white rectangular box with a thin blue border.

Haygrove

The background of the slide is a close-up photograph of two ripe raspberries. The raspberries are bright red with a textured, bumpy surface. They are attached to green stems with small, pointed leaves. The background is a soft, out-of-focus green.

**Fruit For The
Future
Conference
2014**

**Haygrove –
Past, Present
and Future**

- Started growing strawberries on 1-acre in 1988
- Haygrove Tunnels started in 1996 in response to our own farming need for rain protection



Haygrove Farming

- 262ha tunnel production
- Strawberries, raspberries, cherries, blackberries and blueberries

Haygrove Tunnels

- Built Tunnels in 50 countries
- 5 factories
- Dedicated team of design engineers

Haygrove Development

- Non-profit making
- Aim to alleviate poverty through horticulture



Haygrove Growing UK

Crops: Cherries, Strawberries,
Raspberries, Blackberries,
Blueberries

Crops Grown - Raspberries

- ▣ Raspberries -153 hectares
- ▣ Main Variety – Maravilla
- ▣ Substrate, soil grown & organic



Crops Grown - Strawberries

- ▣ Strawberries -59 hectares
- ▣ Main Varieties – Elsanta, Jubilee, Lusa, Amesti
- ▣ Substrate, soil grown & organic



Crops Grown - Cherries

- ▣ Cherries -27 hectares
- ▣ Main Varieties – Kordia, Regina, Karina, Sweetheart, Lapins
- ▣ Soil grown & organic





Haygrove Growing SA

Farms: Hermanus, George

Haygrove Growing Systems

Commercial Tunnels



Field-scale



Portable



Full Tractor Access





Follow contours
of the ground

Self-build

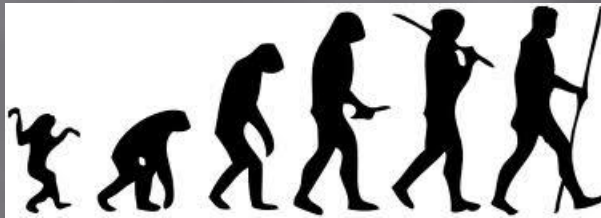


Fully sealed



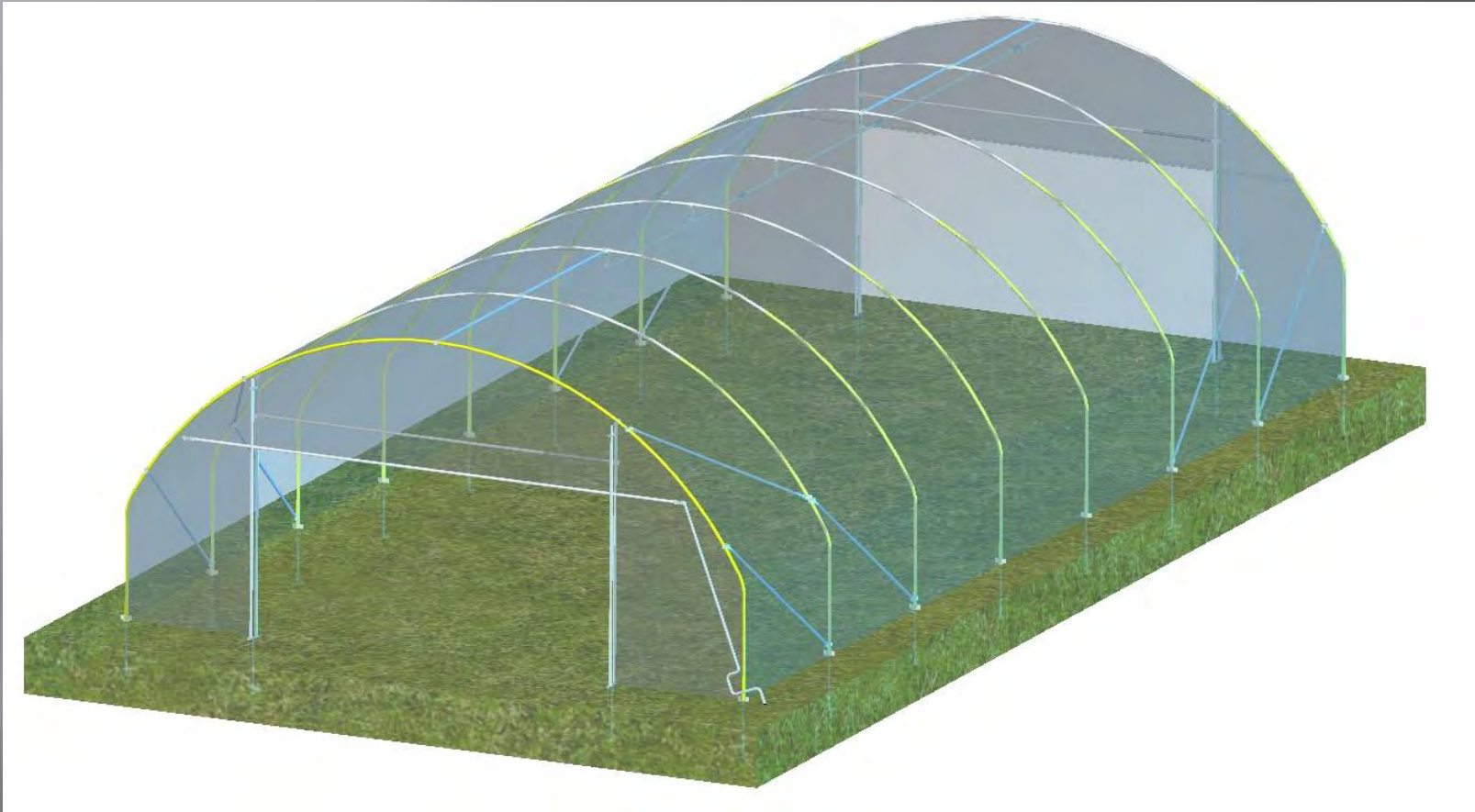


Fully opened





Designs: *Super Solo* *Series*



Designs: *Super Solo Series*



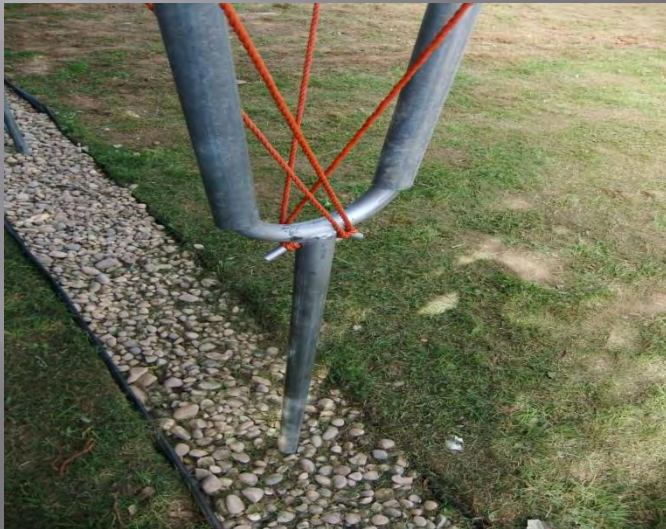


Designs: Solo Series
Streamline Doors

19/04/2007 08:33

Different hoop profiles

- Bigger air volume
- Better picker access
- Easier for spraying



Steel Choice

Cost vs Benefit

35 x 1.5mm Standard	100 %
40 x 1.5mm Standard	132 %
40 x 1.5mm Extra Strong	165 %
40 x 2mm Extra Strong	213 %
40 x 2.5mm Extra Strong	256 %

Based on Maximum Bending Moments, (kgm)

Retrofit Pathway

Haygrove



Rain cover



+ Steel gutters



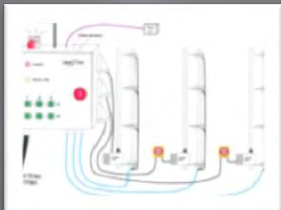
+ Electric ends & sides



+ Electric roof vent



+ Integrated climate controls



Field-scale Tunnel



Field-scale Glasshouse

Retrofit pathway: *steel gutters*





Retrofit pathway: *electric doors*

Retrofit pathway: *electric roof venting*





Haygrove Growing Systems

Substrate Growing Systems



Single Gutter

Block A

6-rows per tunnel

7692 linear meters

Variety Amesti

10 plants per m



Telescopic

Block B

8-rows per tunnel

10,256 linear meters

Variety Amesti

10 plants per m



- ✓ Six rows per tunnel
- ✓ 3m leg spacing
- ✓ Leaf & truss support every 1m or 1.5m
- ✓ Picking height as required
- ✓ End and mid drainage

Telescopic Substrate System

- ✓ Eight rows per tunnel
- ✓ System telescopes and sits on the floor overwinter for fleecing and forcing earlier harvest
- ✓ System is lifted prior to picking
- ✓ Central net bridge for presentation of fruit between double row





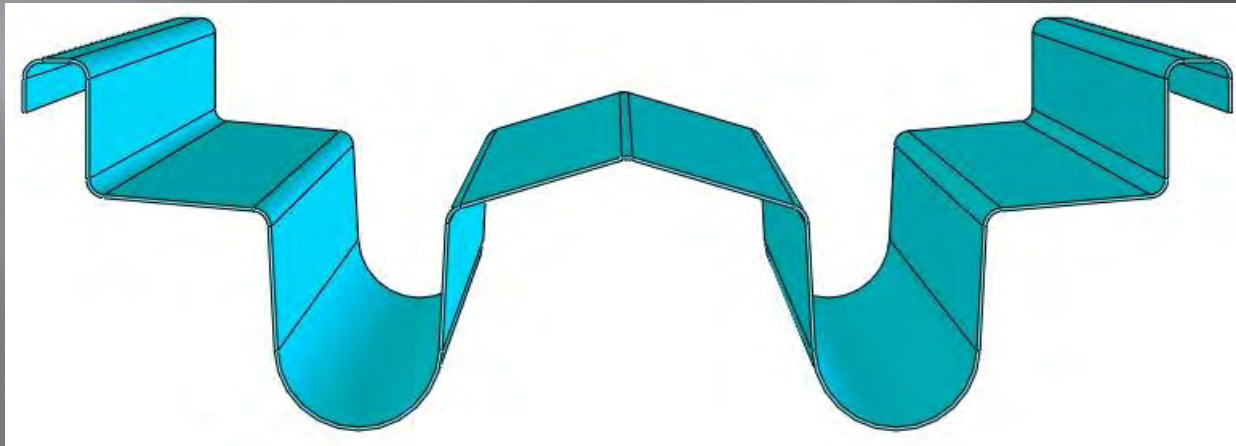
**Tractor
Spraying**



Haygrove Roll
Forming Machine

Technical Description

Steel Gutter	0.65mm rolled steel gutter
Gutter corrosion Protection	Zinc treated pre-galvanised steel protected with different options: <ul style="list-style-type: none">• Primer and white polyester finish• Primer and Polyurethane finish
Leg Spacing	3m
Working height	0.9m to 1.2m depending on requirements
Drainage	Plastic end drainage and mid gutter drainage options available
Truss and leaf support system	Pre-galvanised steel leaf and truss support brackets every 1m or 1.5m depending on specification
Installation	Formed in the field using the Haygrove Roll Forming Machine



THE GRO-HOUSE

Haygrove

Concept

Low Cost Growing Unit

Designed for the Developing World

For use by small farms

Low Specification, easy to build !!

Supplied in a Single Box

Insect Protection with Rain Cover

Think Tropical Climate, not Temperate !!

Think Basic !! Easy to Build !!



TUNNEL IN A BOX

Haygrove

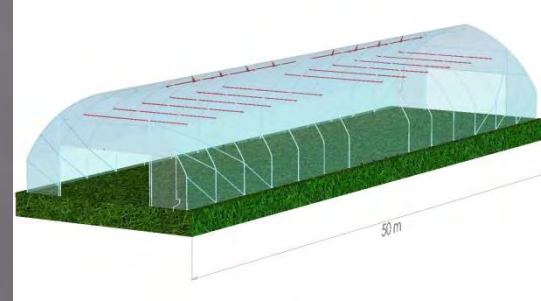
Concept

Pre-Pack Kits

- 30m
- 40m
- 50m
- 60m

SoloGothic 40 Hoop at 7.6m Bay Width

2m Leg Spacing



U-LEG STEEL GUTTER



Concept

Steel gutters are manufactured from pre-galvanised steel sheet shaped in to a “U” profile.

The gutters can be installed as part of a new build or retro fitted at later date.

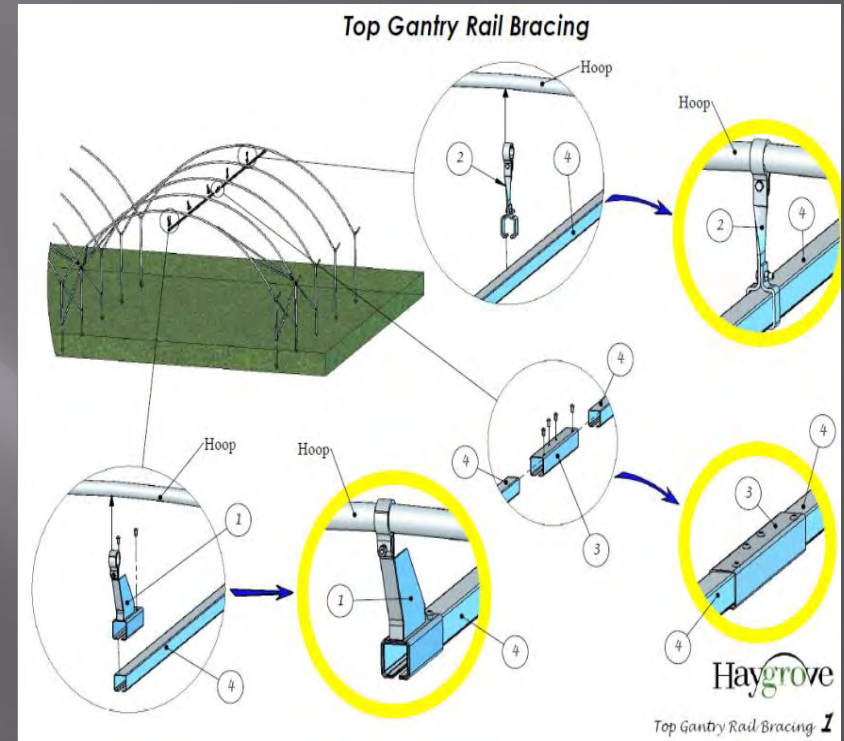


VISUAL CONSTRUCTION MANUAL



Complete product manuals describing the construction and fitting process.

Should make the customers Haygrove experience more enjoyable!!



GROUND LEVEL SUBSTRATE



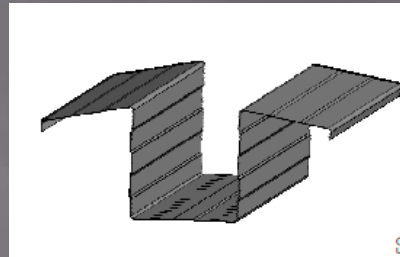
Concept

Advantages of Table Top

- Yield
- Quality

Advantages of Field Grown

- Early Production
- Tractor/Rig managed



TROPICAL TOMATO HOUSE

Haygrove

Concept

- Tropical Region Climate Zone's
- 3m Trellis Height
- Good Ventilation
- Insect sealable



SOLOGOTHIC 50 & SOLOGOTHIC60

Haygrove

Concept

- High Specification Structure
- Good Wind & Snow Strength
- Trellising Capacity
- Great Sealing (they are Solo's...)

Update

50mm Hoops – up to 9m wide

50mm Hoops – up to 10m wide

Think Strong, Solid, Warm inside !!



SINGLE DRAIN SUBSTRATE

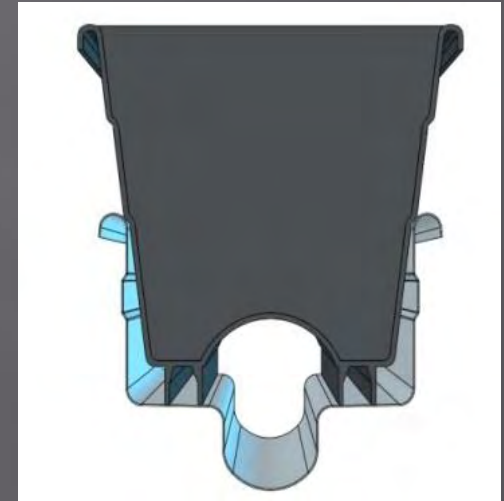
Haygrove

Concept

Gutter for Narrow Trough (becoming more popular in Europe)

- Single Gutter
- Double Gutter
- Triple Gutter
- Hanging

Using Bato Troughs/Pots

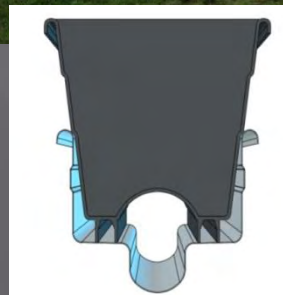


SUBSTRATE GROWING UNIT



Concept

- High Specification Structure
- Good Wind & Snow Strength
- Trellising Capacity
- Great Sealing (they are Solo's...)



Think Strong, Solid, Warm inside !!

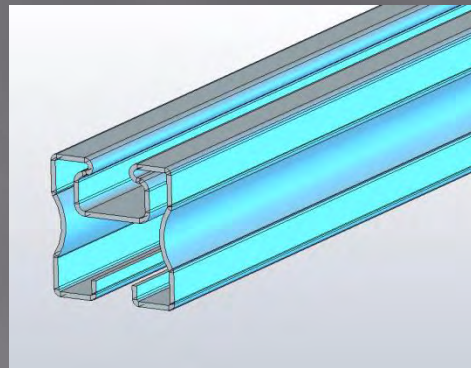
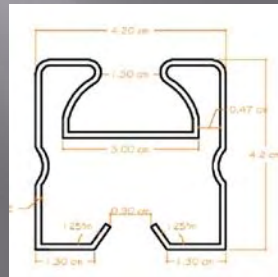
ROLLER VENTING



Concept

Roller Venting Without Sheeting Tapes

Permanent Cover



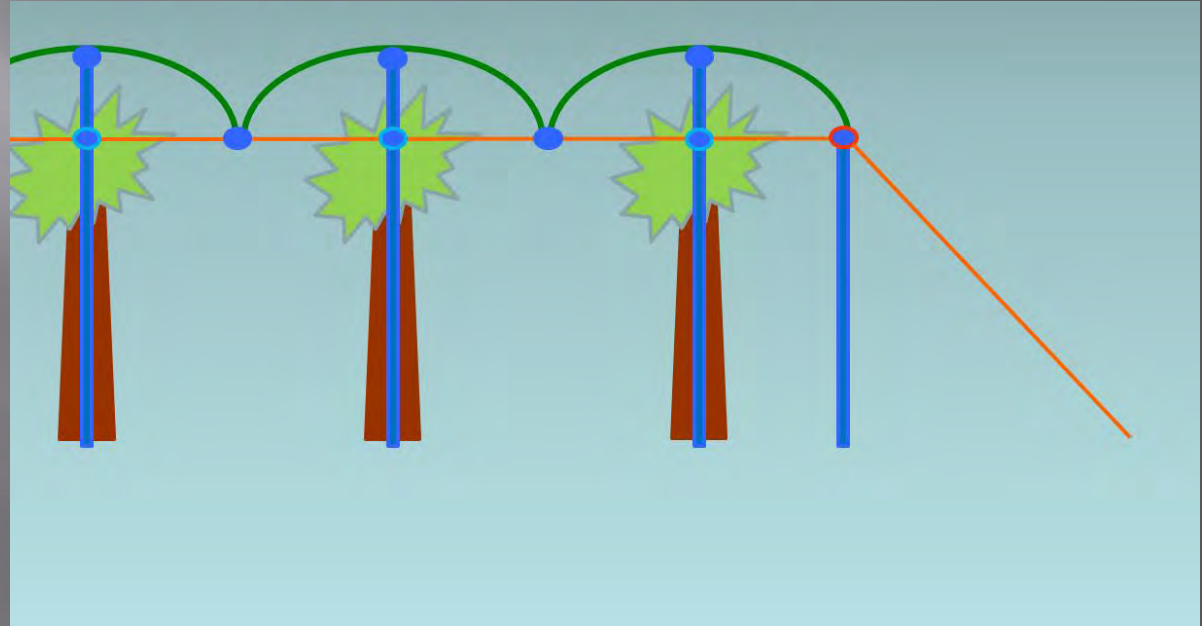
5M CHERRY HOUSE

Haygrove

Concept

Single Row Trees

4 - 5m Centres



TROPICAL ROOF VENT



Concept

- Tropical Rose House Vent
- “Field-Scale” Technology

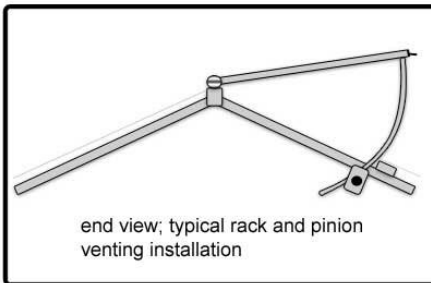


TROPICAL ROOF VENT

Haygrove



Pioneer 5



Thank you

Any Questions?