

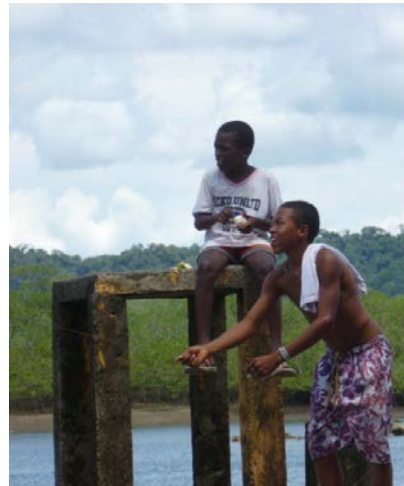
Scenario planning and futures thinking: a useful tool for community-based management of tradeoffs?

Kerry Waylen

Julia Martin-Ortega

Iain Brown

Kirsty Blackstock



The James
Hutton
Institute



1. Can scenario-planning support community management (CBNRM)?
2. Testing a scenario-planning method for 'COMET-LA'
3. Early insights as to the value of this process

(1) Scenario planning + CBNRM

- Scenario planning

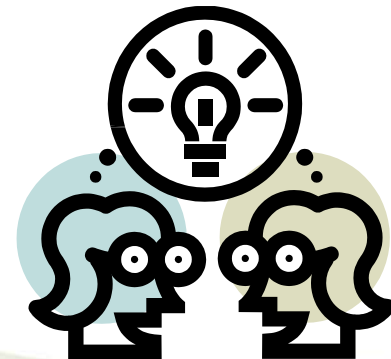
- Military & business origins e.g.



- Potentially useful in other situations

- ▶ Help different actors to recognise and share different understandings
- ▶ Depersonalise discussion of interests and power
- ▶ Help identify shared goals

- Process to promote social learning?



(1) Scenario planning + CBNRM

- Community and NRM
 - Arguments for decentralisation e.g. CBNRM
 - Dissatisfaction with CBNRM
 - ▶ Practices and outcomes do not match ideals
 - ✦ Inequitable processes and outcomes
 - ✦ Unforeseen consequences – social & ecological

- Can scenario planning help?
 - Social learning
 - ▶ Improve collective understanding of system?
 - ▶ Promote decision-making resilient to future change?

(2) Scenario planning + COMET-LA

- FP7 COMET-LA
 - Action research project
 - Aim to support sustainable community-based governance for the management of natural resources, in face of future changes
 - Works in 3 different settings system boundaries linked to place
 - Trials + evaluates methods for
 - (1) building system understanding,
 - (2) identifying links between issues, &
 - (3) considering the future,to support community-led management.



(2) Scenario planning + COMET-LA

- New scenario-planning methodology
- Criteria for design:
 - Participatory
 - Able to build on systems understandings
 - Practically feasible in all 3 settings
 - Encourage consideration of future trends (not just current concerns)
- Methodology
 - Exploratory method – 4 phases
 - Systematic consideration of effects of drivers on system → narrative scenarios
 - Focus attention on discussing ‘robust’ response options and implications for local adaptive management

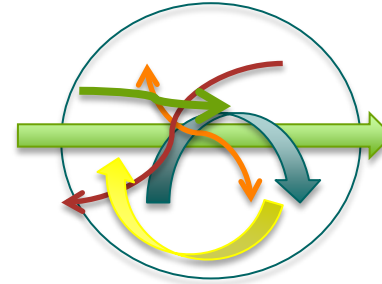


(3) Experiences of process

- Still ongoing but early insights
- Benefits
 - It is novel and yet/therefore it is interesting!
 - Discussions expose expectations about the future – also assumptions about the present system
 - ▶ Help consider the future
 - ▶ Help expose tradeoffs
 - ▶ Starting point for planning and collaboration

(3) Experiences of process

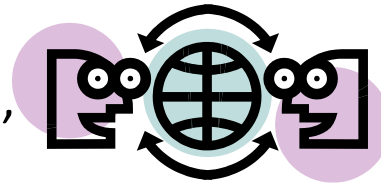
- Challenges



- Disentangling cause and effect
 - ▶ sometimes surprisingly challenging – hence is particularly valuable to have systematic process
 - ▶ Sometimes hard to think about multiple drivers (CC is easy?!)
- Handling views of different interest groups in tension with resource constraints
 - ▶ Risk eliding different interests within community
- Hard to use all forms of knowledge (overly prioritise LEK?!)
 - ▶ Risk eliding natural system properties

(4) Conclusions

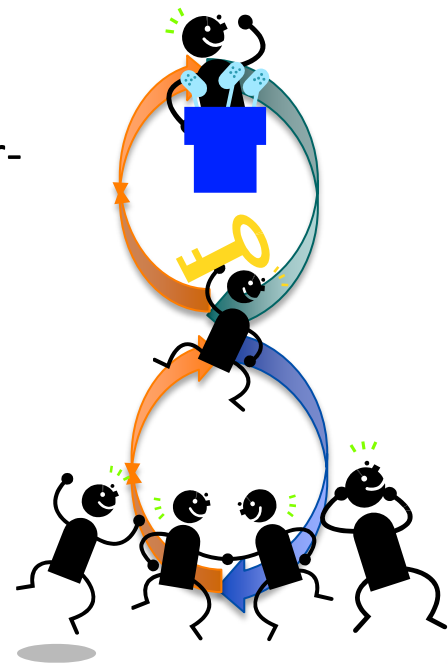
- Scenario planning can support community-based natural resource management
 - Supports social learning
 - ▶ Of team + ‘community’
 - ▶ Can help to consider future change - resilience
 - ▶ Can help to make explicit different values - equity
 - No quick short cuts, or ‘one size fits all’ solutions
 - ▶ Systematic + onerous, or quick + ‘dirty’?
 - ▶ Always need facilitation skills + time



(4) Conclusions

However

- Higher-level constraints on adaptive management
 - Process identifies constraints on community: implications for higher-level institutions
 - However, locally-led recommendations based in locally-led scenario-processes may not have higher-level understanding or 'buy in'
 - Echoes existing challenges identified in MLG literature
- If/how to engage higher-level institutions in such local-led processes?



Thanks!

Any questions?



Acknowledgements.

COMET-LA is a 3-year project (January 2012 - January 2015) co-funded by the European Commission under the Seventh Framework Programme, addressing the Strategic theme: ENV.2011.4.2.3-1 Community based management of environmental challenges. Grant agreement no: 282845 <http://www.comet-la.eu/>

