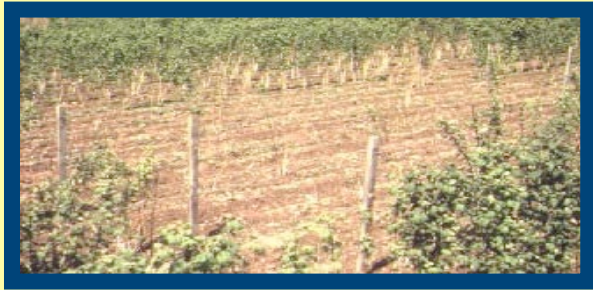


Genetic Resistance To Raspberry Root Rot Reducing Fungicide Usage



Root rot resistance caused by *Phytophthora fragariae* var. *rubi* continues to be one of the most serious diseases of raspberry.



Serious crop loss in a raspberry plantation by raspberry root rot

Planting clean resistant cultivars is the ideal control strategy. No commercial raspberry cultivars in Europe have resistance.

This is a major goal of the breeding programme.

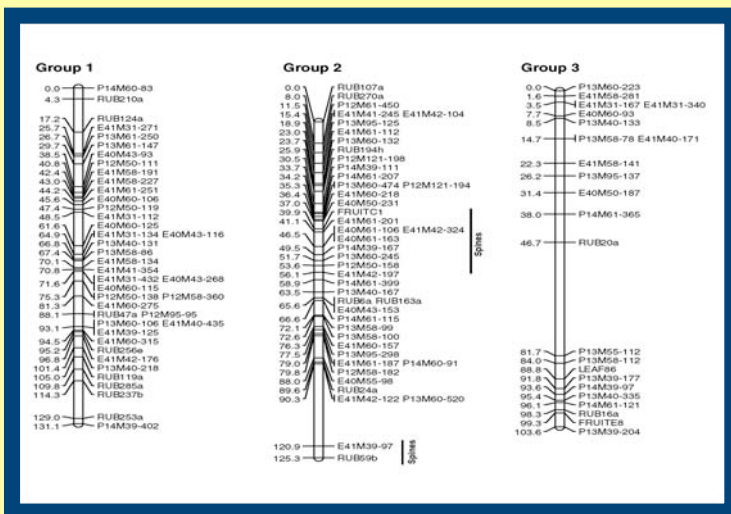


Fungicide control is necessary as no resistant cultivars are available

Genetic resistance exists in North American cultivars eg. 'Latham' exhibits field resistance to root rot.



Latham and Glen Moy after inoculation with raspberry root rot



Genetic linkage map of raspberry

Efforts are being made to understand the genetic basis of resistance using a cross between North American cv. 'Latham' and the European cv. 'Glen Moy'.

The genetic linkage map can be used to locate genetic resistance.

