

Eucablight (QLRT-2000-00971) – A Late Blight Network for Europe

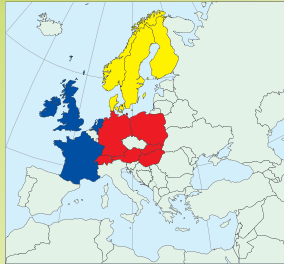
Co-ordinator: Alison Lees,
Scottish Crop Research Institute, Invergowrie, Dundee DD2 5DA, Scotland.
Email: alees@scri.sari.ac.uk Tel: +44 (0)1382 568589

Scottish Crop
Research Institute



euca
blight

www.eucablight.org



Eucablight is an EU Concerted Action funded under Framework 5. The project, which began on 1st February 2003 and will run for 3 years, brings together researchers from Western, Central and Nordic Europe working on potato late blight. It aims to harmonise methodologies and data from both the host and pathogen and to train researchers in these methods. At present Eucablight has 77 registered participants coming from 24 member institutes in 15 European countries.

Late blight of potato, caused by *Phytophthora infestans*, is one of the most devastating diseases of potato worldwide. The migration of the A2 mating type of *P. infestans* from central Mexico to other parts of the world during the 1970s and 1980s resulted in increased disease severity and has re-focused attention on this disease. Late blight can cause tuber losses of 100% in susceptible germplasm and crop losses and protection costs are substantial.



Host

Many sources of resistance to Late Blight exist in wild germplasm and commercial cultivars but the nature of that resistance is often poorly understood. This project uses our collective expertise to compare existing practices and suggest new and standardised screening procedures to allow rational and objective comparisons of genetic resources. These Eucablight recommended and tested protocols are now available on the project website.

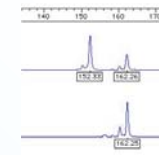


'Training scientists in methods for host and pathogen characterisation is a primary aim of Eucablight'

Pathogen



The collation of molecular marker data with information on virulence, mating type and fungicide resistance



is a fundamental aim of the project. This will allow us to determine the mechanisms and tempo of genetic change within populations as well as to determine the spatial distribution and patterns of migration of *P. infestans* populations across Europe.

Standardised protocols for examining phenotypic and genotypic diversity in *P. infestans* are being developed. Existing pathogen data has been collected from the partners and entered into a database. New data, collected by partners using the standardised protocols, will be entered directly into the database using a specially created data entry tool – 'Phytophthora.exe'



Further information

Further information about the project can be found in eleven languages, along with details of the participants, newsletters, protocols and full details of past and future meetings and training courses, on the Eucablight website (www.eucablight.org).

Interested parties can 'subscribe' to the project from the website to receive news updates and information. Anyone who requires further information or wishes to submit host or pathogen data to our databases should contact the project co-ordinator directly at the above address.

